



# VO 255/260/270 E

Insulated Articulated Overcenter Aerial Lift

**DEMAND BETTER.**

## STANDARD FEATURES

- Maximum Working Height: 75'10" (23.1m)
- Maximum Horizontal Reach, Overcenter: 50'8" (15.4m)
- Maximum Horizontal Reach, Non-Overcenter: 43'5" (14.1m)
- Maximum Platform Capacity: 350 lbs. (159kg)



The Versalift 10' Elevator is designed to give you Max Payload Capacity and reduce weld & machining labor



For more information about any of our outstanding VERSALIFT products, contact your authorized VERSALIFT Distributor or call 1.800.825.1085.



# VO 255/260/270 E

## Insulated Articulated Overcenter Aerial Lift

### GENERAL SPECIFICATIONS

	VO-255	VO-260	VO-270-E
Horizontal Reach Overcenter	46'2" (14.1m)	50'8" (15.4m)	50'8" (15.4m)
Horizontal Reach Non-Overcenter	41'11" (12.8m)	46'5" (14.1m)	46'5" (14.1m)
Maximum Platform Capacity	400 lbs. (181kg)	350 lbs. (159kg)	350 lbs. (159kg)
Lower Boom Lift Eye Capacity	1,500 lbs. (680kg)	1,500 lbs. (680kg)	1,500 lbs. (680kg)

### HEIGHT WITH STANDARD REVERSE MOUNT PEDESTAL

Height to Bottom of Platform	55'4" (16.9m)	59'10" (18.2m)	70'10" (21.6m)
Working Height	60'4" (18.4m)	64'10" (19.8m)	75'10" (23.1m)
Stowed/Travel Height	11'9" (3.5m)	11'9" (3.5m)	12'9" (3.8m)
Weight of Lift	5,860 lbs. (2660kg)	5,970 lbs. (2707kg)	9,600 lbs. (4350kg)

### HYDRAULIC SYSTEM

Operating Pressure	2900 PSI (205kg/cm <sup>2</sup> )	2900 PSI (205kg/cm <sup>2</sup> )	2900 PSI (205kg/cm <sup>2</sup> )
Flow Rate	7 GPM (26 lpm)	7 GPM (26 lpm)	7 GPM (26 lpm)
Filtration	10 Micron Return	10 Micron Return	10 Micron Return
System Type	Open Center	Open Center	Open Center
Power Source	PTO Pump	PTO Pump	PTO Pump

### BOOM ACTION

Upper Boom Articulation	270° relative to lower boom	245° relative to lower boom	245° relative to lower boom
Lower Boom Articulation	125° from horizontal to 35° past vertical	125° from horizontal to 35° past vertical	125° from horizontal to 35° past vertical
Rotation	360° Continuous	360° Continuous	360° Continuous

### INSULATION GAPS

Upper Boom Insulation Gap	214" (5.4m)	214" (5.4m)	214" (5.4m)
Lower Boom Insulation Gap	24" (.61m)	24" (.61m)	24" (.61m)

### VEHICLE REQUIREMENTS

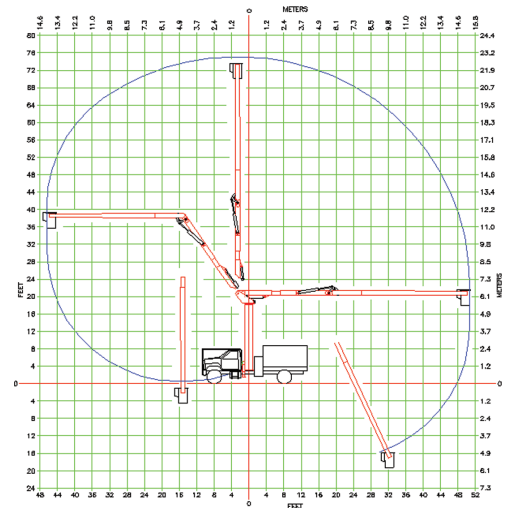
Cab to Axle (minimum)	120" (3m)	120" (3m)	138" (3.5m)
GVWR	28,000 lbs. (12,700kg)	28,000 lbs. (12,700kg)	32,000 lbs. (14,500kg)

#### NOTE:

- Specifications may vary without prior notification.
- Required GVWR can vary significantly with chassis, lift mounting location, service body, accessories, and desired payload.

### OPTIONS

- Tilt Platform
- Platform Size Variations
- Capacity Variations
- Lifting Eye Attachment
- Two-Speed Throttle Control
- Unitrol H.R.
- 10' Elevator (VO-255/VO-260)



P.O. Box 20368  
 Waco, TX 76702-0368  
 254.399.2100  
 Fax: 254.399.2651  
 1.800.825.1085  
 www.timemfg.com