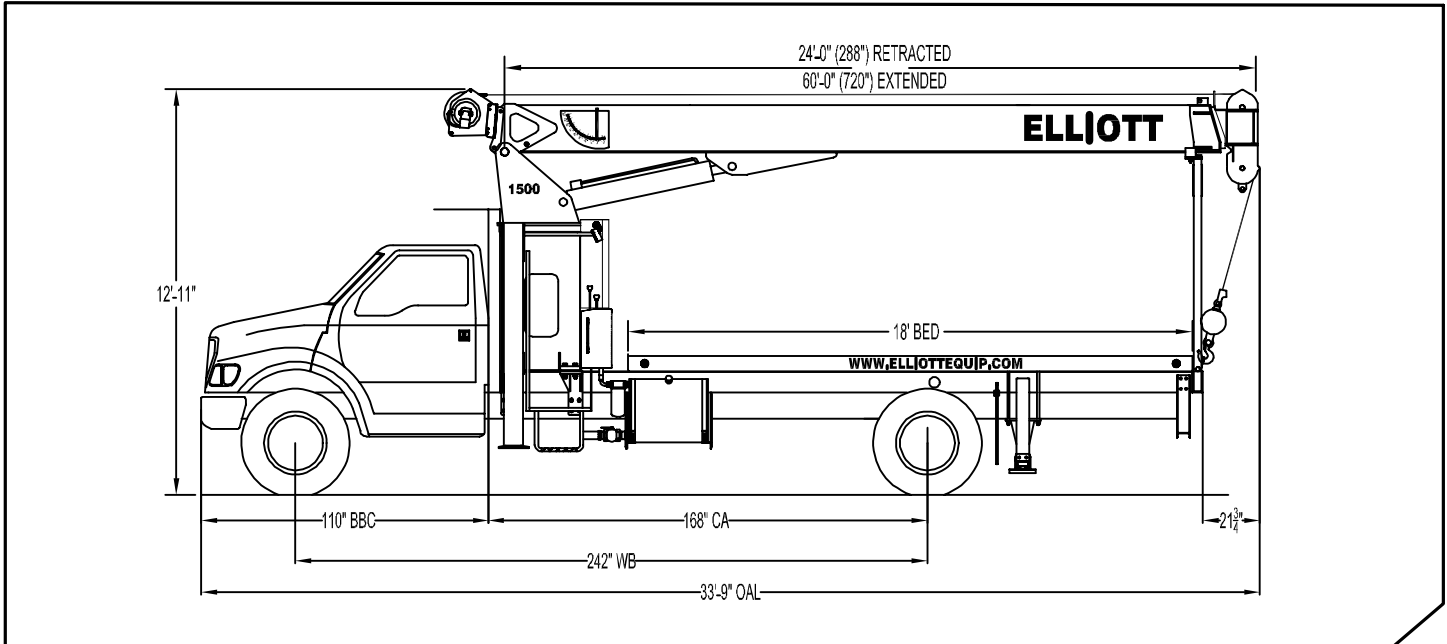


BoomTruck™ 1560



GENERAL UNIT DESCRIPTION

BoomTruck – When it comes to design and engineering, Elliott's BoomTruck is generations apart from the traditional crane—making it ideal for the exacting demands of today's job sites. With an industry-leading 18-ton capacity crane equipped with the 38' boom option, the BoomTruck delivers high performance with increased efficiency—from its high-speed outrigger set-up, boom extension and retraction to its high-pull winch. Plus our BoomTruck requires very little maintenance thanks to its layaway hoist, 10 percent fewer fittings than competitor models and the industry's best warranty. That gives you time to enjoy operator amenities like the built-in cup holders and 12-volt charger on the operator console.

Basic unit includes base assembly supporting front mounted rotating turret, hydraulically powered rotation mechanism, oil reservoir, oil, and dual operator console with levers linked to manual hydraulic control valve mounted to pedestal. Base mounted "A" frame link type outriggers hydraulically powered, individually controlled main outriggers. Under frame mounted outriggers for rear stabilization. High strength steel three section hydraulic and cable telescoping boom with one double acting 7" lift cylinder. Boom can be stowed over cab to increase payload & eliminate payload to boom interference on bed. Load Moment Indicator System with display and hydraulic function lockout for load capacities. Power take off and pump drive, pressure gauge, three-section gear pump and holding valves on all cylinders. Control console is equipped with Anti-2-Block system, engine start/stop, variable speed foot throttle, horn, winch burst of speed, and outrigger motion alarm. Additional equipment includes triangle reflector kit, backup alarm, and fire extinguisher. Paint BoomTruck white, outriggers red and bed and boxes black. Installed on chassis, tested and ready to operate. Unit certified to ANSI B30.5 for Mobile and Locomotive cranes.

Technical Specifications

Crane Capacity: 30,000 pounds at a five feet load radius.

Maximum Tip Height: 70' height

Control Console: Dual operator stations equipped with four single axis levers for the main crane controls with independent controls for all outriggers for precise leveling. The levers for the outriggers and stabilizers are offset and shorter than the main crane control levers for added safety. Each side includes a bubble level gauge, engine start/stop switch, signal horn button, variable speed foot throttle, lifting capacity chart, range diagram chart, and boom angle indicator. A system pressure gauge is located on the driver's side console.

Boom: Three-section fully proportional, high strength steel plated rectangular tube sections. A maximum boom tip height of 70 feet mounted on a truck. The boom nose is equipped with one upper and two lower sheave for two and three-part line operation. Assembly includes heavy-duty cylinder fittings, pivot pins, and replaceable wear pads.

Winch: Mounted at the base of the boom for a long fleet angle and flat level spooling of cable. Winch is driven by planetary reducer and powered by a hydraulic motor. Burst-of-speed winch provides increased line speed. The winch brake is spring applied, pressure release design. Supplied with 275 feet of 9/16" diameter wire rope with a single-line wire rope pull of 9,600 pounds, and a down-haul ball with swivel hook for single part line.

Hydraulic Load Limiter (HLL) System: HLL System senses lift cylinder pressure. If maximum capacities are exceeded, hydraulic function lockout is provided. A load range gauge is located at each side console indicating load condition of the crane along with an indicator light to alert of an overload. An anti-2-block system works in conjunction with HLL system and has the ATB cord routed inside of the boom.

Outriggers: A-frame link type outriggers for a minimum of 20'-10" extended span. Additional stabilization provided by rear under frame mounted stabilizers.

Frame: Full length, all welded rigid 4-plate design sub-frame for a 18' bed that bolts to the truck frame under the pedestal.

Turret: Turret is one-piece weldment. Turret rotates on large diameter ball bearing.

Rotation: Hydraulic motor drives turret through double reduction planetary swingdrive for 372 degree non-continuous rotation. The swing drive system has a spring applied, pressure release brake.

Boom Extension: 4" external cylinder with 3-1/4" rod extends the largest telescopic boom section. The top boom section extends with wire rope.

Lift: One double-acting 7" full displacement, long stroke cylinders provide smooth and stable boom elevation. Holding valve prevent boom from lowering in event of hose failure.

Cylinders: All cylinders use microhoned cylinder tubing, chrome shafts, top grade packing and protective rod wipers. Cylinder-mounted holding valves provided on all load-holding cylinders.

Hoses: All high pressure hose is wire braid reinforced with a minimum safety factor of 4 to 1.

Oil Tank Capacity: 70 gallon mounted to truck frame on roadside.

Hydraulic System: Equipped with cable-shift PTO, gear type 3-section pump, SAE O-ring face seals on pressure lines, a 10 micron return line filter and a shut-off ball valve. The control valve distributes all flow to obtain a 39 gpm for the hoist system, 9 gpm to the swing circuit and 23 gpm for the other crane functions. System is parallel open center type, and the operating pressure is approximately 3,000 PSI.

Cab Equipment: PTO cable and switch with indicator light installed in truck cab. U/L approved 5:BC dry chemical fire extinguisher installed in truck cab.

Operator Manual: One copy of operation, maintenance, safety and parts manual provided with each unit.

Installation: Unit installed on customer's truck, painted, system and tank filled with oil, tested, inspected, certified and ready to operate.

Standard Paint: Paint BoomTruck white, outriggers red, and bed and boxes black.

Bumper: Bureau of Motor Carrier Safety rear bumper.

Weight: Approximately 17,200 lbs. with 18' steel-floor bed less truck.

Truck Chassis Requirements: Approximately 168" C.A. RBM 1,463,000 in-lb. per rail, 12,000 lb. front axle and 33,000 lb. GVWR required. Trucks must have extended rear frame, increased cooling, heavy-duty front and rear springs, 12V electrical system with high capacity alternator, cab clearance stop/tail/backup lights, and I.D. lamps. Additional equipment to consider: front tow hook, pintle hook, mud and snow tires for off highway use. Recommended GVWR is minimum for BoomTruck with flatbed only. Contact factory when additional equipment is to be added.

Options

Bed: Length 18', width 96" with steel tread plate or wood floor bolted to subframe, 6" rub rail and heavy duty cross members. Stake pockets on both sides of bed. Spray suppressant splash guard installed. Chassis stop/turn/back-up lights remounted as necessary. Rear clearance and side marker lights with reflectors on bed.

Hook Block for 2/3-part load line

Rear Mount

Tractor Mount

Tool Boxes

Front Jack for 360 degree crane operation

Pedestal Mounted Tool Circuit

Radio Remote Control Operation

Steel Gravity Level Platform



4427 South 76th Circle

Omaha, NE 68127

Phone: 402-592-4500

Fax: 402-592-4553

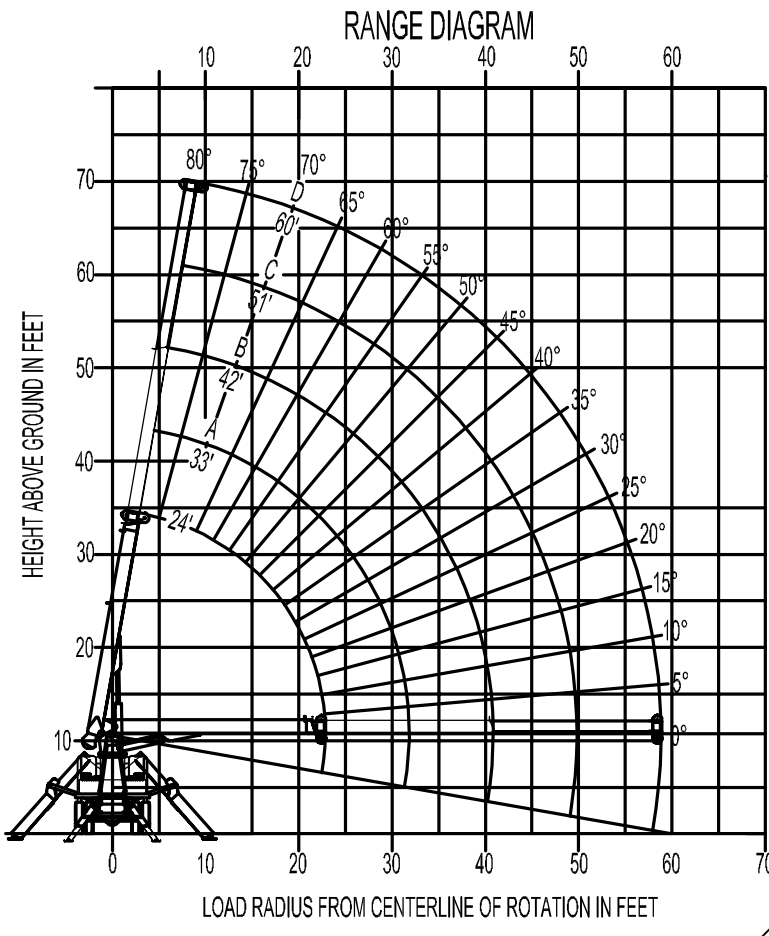
Email: info@elliottequip.com

www.elliottequip.com

Notes:

Notes:

MAIN BOOM LOAD RATINGS										
LOAD RATINGS IN LBS. WITH OUTRIGGERS AND STABILIZERS EXTENDED										
LOAD RADIUS (feet)	LOADED BOOM ANGLE	24 ft	LOADED BOOM ANGLE	A 33 ft	LOADED BOOM ANGLE	B 42	LOADED BOOM ANGLE	C 51 ft	LOADED BOOM ANGLE	D 60 ft
5	76	30,000								
10	63	18,400	71	17,700	75	17,000	78	15,800		
15	48	13,800	61	12,800	68	12,300	73	11,600	75	11,400
20	27	10,700	52	10,100	61	9,600	67	9,100	70	8,800
25			39	8,300	53	7,900	60	7,400	65	7,200
30			21	6,600	43	6,600	53	6,300	60	6,000
35					32	5,500	46	5,400	54	5,200
40					13	4,100	37	4,600	48	4,500
45							26	3,750	41	3,500
50									32	3,050
55									27	2,600
	0	7,100	0	4,650	0	3,250	0	2,350	0	1,750



THIS AERIAL DEVICE IS NON-INSULATING. IT PROVIDES NO ELECTRICAL PROTECTION. CONTACT WITH OR INADEQUATE CLEARANCE TO AN ENERGIZED LINE OR APPARATUS IS AN ELECTROCUTION HAZARD.