

Model 4000.

Our 40-ton boom truck offers an industry leading capacity chart at a 9 ft. radius, and the flexibility of a commercial chassis. Full-span, mid-span, and retracted span charts are standard, to provide you with the adaptability you need for your application. The 105' boom and optional 49' jib allow for vertical reach of up to 164'. A configuration is even available to mount the 40105R on a 3-axle commercial chassis.

STANDARD FEATURES	
- LMI Load Moment Indicator	- Full-span / mid-span / retracted span capacity chart
- Internal boom hard wire anti-two block	- Ground operated outrigger controls
- Continuous rotation	- Variable speed thumb throttle
- Front bumper stabilizer	- Glide swing w/ manual foot brake
- Proportional boom extension	- Aluminum bed wings
- Two-speed winch	- Rear bumper underride protection
- Rotation resistant wire rope	- Hydraulic oil cooler
- Winch drum tensioner	- Horizontal boom rest
- 12V power outlet at control console	- One hard copy and one CD operator manual
- Cup holder at control console	- 1-year parts and labor and 5-year structural warranty

OPTIONS	
- Air conditioning (crane cab)	- Radio remote controls
- Steel gravity-leveled two man basket	- Line blocks
- 2-piece jib	- Toolboxes
- Automatic rotation lockout	- Vertical line block holder
- Auxiliary winch	- Swing counterweight

Specifications

	40105R	H40105R
PERFORMANCE		
Lifting Capacity	80,000 lbs.	80,000 lbs.
Crane Weight	38,200 lbs.	38,200 lbs.
Jib Lengths	49'	49'
Maximum Vertical Reach	164'	164'
Operator Controls	Operator Cab	Operator Cab

WINCH		
Speed	2	2
Winch Type	Planetary	Planetary
Bare Drum Pull	15,000 lbs.	15,000 lbs.
Single Line Pull	10,000 lbs.	10,000 lbs.
Line Speed (4th layer)	162/325 fpm	162/325 fpm
Wire Rope Length	430'	430'
Wire Rope Size	5/8"	5/8"
Breaking Strength	56,420 lbs.	56,420 lbs.

HYDRAULICS		
Pump Sections	1	1
Pump Type	Piston	Piston
Gallons per Minute	70	70
Reservoir	143 gallons	143 gallons

OUTRIGGERS		
Front Type	OUT-DOWN	OUT-DOWN
Front Spread	26'2"	26'2"
Rear Type	OUT-DOWN	OUT-DOWN
Rear Spread	26'2"	26'2"
Front Bumper Stabilizer	Required	Required

Crane weights include crane turret, boom, subbase, front and rear outriggers, front stabilizer, boom rest, and reservoir (w/ oil)*

All designs conform to ANSI B30.5. Welding conforms to AWS D1.1. All testing will conform to SAE 1063 and SAE 765 specifications.

BOOM

4-section 105' proportional boom. 33'9" retracted to 105' extended length. Four-plate construction with re-enforced side plates. Anti-friction wear pads. Extension with double acting hydraulic cylinder and cable crowd system. Boom working range of -10 degrees to 80 degrees. Boom nose tip shall contain one upper sheave and three lower sheaves

OUTRIGGERS

Two sets of out-and-down type outriggers with 26'2" extended full span. Additional 21' mid-span and 7' fully retracted span. 22' diameter ball socket removable aluminum pads that stow on outrigger legs. Ground-operated outrigger controls located on each side of unit under aluminum bed wings to provide independent control. Front bumper stabilizer (requires extended front frame extension).

CONTROLS

Seated controls with operator cab that rotate with turret. Operator cab to include sliding door, two air circulation fans, deluxe cloth operator seat, electric control levers in seat console, variable speed thumb throttle, Load Moment Indicator (LMI) console display, tinted glass windows, front window and top window wipers, sliding side window, diesel heater, engine start/stop switch, boom angle indicator, lifting capacity chart, range diagram, signal horn, 12V DC power supply, and cup holder. Includes glide swing with manual foot brake.

HYDRAULICS

Closed center system. Piston pump direct mounted to PTO on truck chassis transmission providing 70 gpm of flow. 143 gallon hydraulic oil reservoir mounted on top of front out-and-down outriggers. Hydraulic reservoir shall include sight/temperature gauge, return filter, and gate valve. Hydraulic oil cooler mounted on boom rest.

WINCH

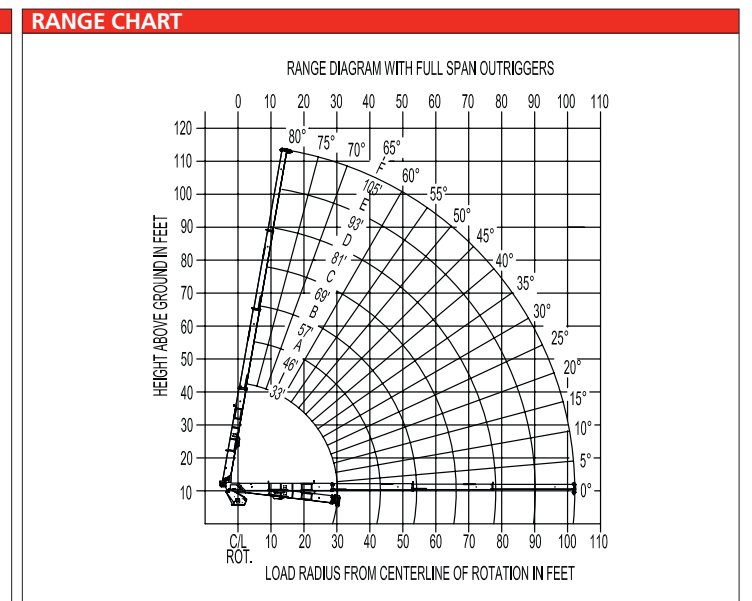
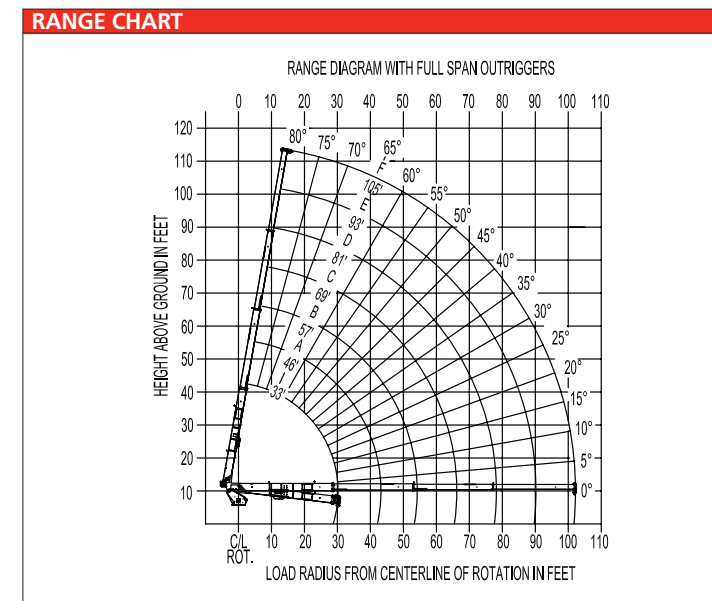
Two-speed planetary winch with 15,000 lb. bare drum pull. Mounted at base of boom with 430' of 5/8" diameter rotation resistant wire rope with 10,000 lb. line pull. Optional auxiliary winch mounted to back of main winch. Includes winch drum tensioner. Winch is powered by hydraulic motor and include integral load holding brake. Internal hard-wire anti-two-block.

Chassis Specifications

40105R			
Wheelbase (WB)	256"	GVWRR	46,000 lbs.
Cab-To-Axle (CT)	192"	Int Front Frame Ext.	Required
Afterframe (AF)	147"	Frame Section Modulus	30.0 @ 110,000
GVWR	66,000 lbs.	RBM	3,300,000
GVWRF	20,000 lbs.		

H40105R			
Wheelbase (WB)	271"	GVWRR	60,000 lbs.
Cab-To-Axle (CT)	198"	Int. Front Frame Ext.	Required
Afterframe (AF)	147"	Frame Section Modulus	30.0 @ 110,000
GVWR	80,000 lbs.	RBM	3,300,000
GVWRF	20,000 lbs.		

Each chassis must be reviewed specific to the configuration and options that are selected. The 40105R and H40105R capacity charts are differentiated by chassis stability weight requirements. The bare weights of chassis and/or counterweight will determine which chart can be used based upon stability. The wheelbase, cab-to-trunnion, and afterframe specifications are recommended only. Actual requirements will be based upon several factors, including number of axles, bare weight of chassis, and options selected for crane. Special permits may be required, dependent upon the state the crane will be operating. Pusher axle or tag axle configurations will be based upon meeting federal bridge laws as well as state requirements.



MAIN BOOM LOAD RATINGS WITH FULLY EXTENDED OUTRIGGERS													
MAIN BOOM LOAD RATINGS													
LOAD RATINGS IN LB WITH FULLY EXTENDED OUTRIGGERS AND STABILIZERS EXTENDED													
LOAD RADIUS IN FEET	LOADED BOOM ANGLE	LOADED BOOM ANGLE	A	LOADED BOOM ANGLE	B	LOADED BOOM ANGLE	C	LOADED BOOM ANGLE	D	LOADED BOOM ANGLE	E	LOADED BOOM ANGLE	F
9	72.6	80.000											
10	70.4	64,500	76.5	46,600									
12	66.4	58,100	73.9	46,600	77.9	46,600							
15	60.2	50,800	70.0	46,600	74.9	44,600	78.4	41,700					
20	48.5	39,700	62.7	38,900	69.3	36,500	74.0	34,900	77.2	30,700			
25	33.5	30,000	54.8	31,000	63.5	31,100	69.5	29,500	73.4	26,100	76.4	23,500	19,000
30			45.7	24,600	57.1	23,600	64.6	24,000	69.5	22,600	73.1	20,400	18,700
35			34.7	17,900	50.1	17,900	59.3	18,350	65.3	18,000	69.7	17,800	16,300
40			17.8	14,200	42.4	14,200	53.8	14,700	60.9	15,000	66.1	15,400	14,500
45					33.2	11,500	47.9	12,000	56.4	12,300	62.2	12,600	12,650
50					21.7	9,400	42.0	9,700	52.0	9,900	58.7	10,150	10,200
55							34.5	7,950	46.8	8,150	54.6	8,350	8,400
60							24.9	6,500	41.2	6,750	50.2	6,900	6,900
65									34.8	5,600	45.6	5,750	5,700
70									26.9	4,800	40.6	4,750	4,750
75									15.2	3,800	35.0	3,950	4,800
80										28.4	3,250	40.3	3,200
85										19.5	2,700	35.3	2,600
90											29.7	2,100	
95												22.5	1,650
100													10.7
	0	18,500	0	11,500	0	7,500	0	4,900	0	3,200	0	2,000	0
DEDUCTIONS FOR STOWED (lb)		1,000		750		600		500		400		350	

MAIN BOOM LOAD RATINGS WITH FULLY EXTENDED OUTRIGGERS													
MAIN BOOM LOAD RATINGS													
LOAD RATINGS IN LB WITH FULLY EXTENDED OUTRIGGERS AND STABILIZERS EXTENDED													
LOAD RADIUS IN FEET	LOADED BOOM ANGLE	LOADED BOOM ANGLE	A	LOADED BOOM ANGLE	B	LOADED BOOM ANGLE	C	LOADED BOOM ANGLE	D	LOADED BOOM ANGLE	E	LOADED BOOM ANGLE	F
9	72.6	80,000											
10	70.4	64,500	76.5	46,600									
12	66.4	58,100	73.9	46,600	77.9	46,600							
15	60.1	50,800	69.9	46,600	74.9	44,600	78.4	41,700					
20	48.5	39,700	62.7	38,900	69.3	36,500	74.0	34,900	77.2	30,700			
25	33.4	30,000	54.8	31,000	63.5	31,100	69.5	29,500	73.4	26,100	76.4	23,500	19,000
30			45.7	24,600	57.2	25,200	64.7	25,500	69.5	22,600	73.1	20,400	18,700
35			34.8	18,900	50.3	18,350	59.5	19,700	65.5	19,700	69.7	17,800	16,300
40			17.9	14,900	42.5	15,300	53.9	15,600	61.1	15,900	66.2	15,700	14,500
45					33.3	12,400	48.0	12,700	56.5	13,000	62.4	13,200	13,500
50					20.1	10,100	41.5	10,500	51.7	10,750	58.4	10,900	11,150
55							34.6	8,800	47.0	9,050	54.7	9,200	9,350
60							25.0	7,200	41.4	7,600	50.5	7,800	7,950
65									34.9	6,400	45.9	6,600	6,750
70									27.1	5,450	40.9	5,600	5,750
75									15.3	4,500	35.2	4,700	4,800
80										28.6	3,950	40.6	4,100
85										19.7	3,300	35.7	3,450
90											29.7	2,100	
95												22.8	2,350
100													11.0
	0	18,500	0	11,900	0	8,150	0	5,450	0	3,900	0	2,500	0
DEDUCTIONS FOR STOWED (lb)		1,000		750		600		500		400		350	

Elliott BoomTruck specifications subject to change. Counterweight may be required for stability.